



The iconic unisex zip-thru hoodie sweatshirt

Medium Fit

XXS > 5XL*

350 GSM

Details

- Set-in sleeve
- Double self fabric lined hood
- Round drawcords in matching body colour
- Closed end metal tipping and metal eyelets
- Herringbone tape at inside back neck seam
- Self fabric half moon at back neck
- 2 needle topstitch centred on seam at hem, cuff and armhole
- 1x1 rib at sleeve hem and bottom hem
- Kangaroo pocket at front
- Exposed metal zip at centre front

Composition

Shell - Brushed
 100% Cotton - Organic Ring Spun Combed - 350 GSM
 Fabric washed

Care

Wash similar colours together, no ironing on print, wash and iron inside out.



Country of origin

Weaving : Bangladesh
 Dyeing : Bangladesh
 Assembly : Bangladesh



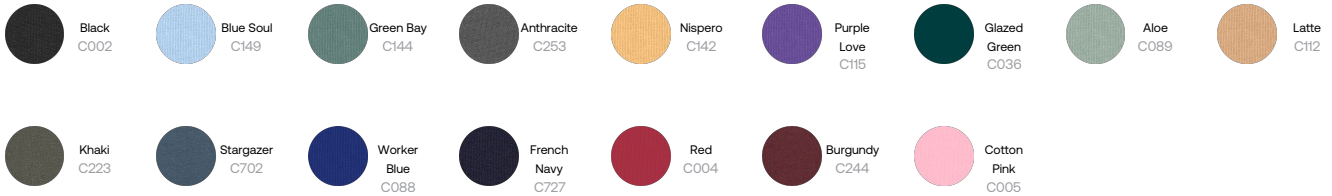
Original Certified by Control Union



Whites



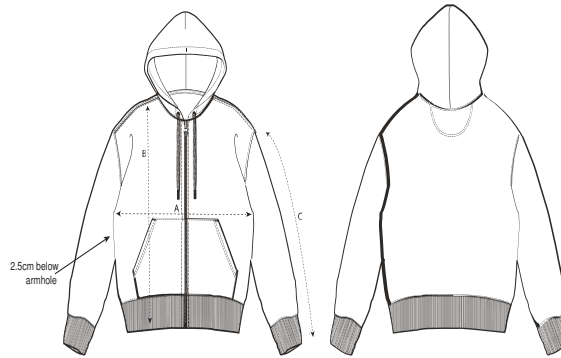
Colors



Essential Heathers



Size Guide



| Sizes | | XXS | XS | S | M | L | XL | XXL | 3XL | 4XL | 5XL |
|-------|---------------|------|------|----|------|------|----|------|------|------|------|
| A | Half Chest | 51 | 53 | 55 | 59 | 62 | 65 | 69 | 73 | 78 | 81 |
| B | Body Length | 62 | 65 | 69 | 73 | 75 | 77 | 79 | 81 | 83 | 84 |
| C | Sleeve Length | 57.5 | 59.5 | 63 | 65.5 | 67.5 | 68 | 68.5 | 68.5 | 68.5 | 68.5 |

Packing

| Sizes | | XXS | XS | S | M | L | XL | XXL | 3XL | 4XL | 5XL |
|-------|------------|-----|----|----|----|----|----|-----|-----|-----|-----|
| | Pieces/bag | 5 | 5 | 5 | 5 | 5 | 5 | 5 | 5 | 5 | 5 |
| | Pieces/box | 10 | 20 | 20 | 20 | 20 | 20 | 20 | 10 | 10 | 10 |